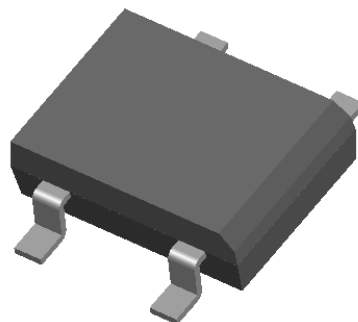




**Bridge Rectifiers**  
**Reverse Voltage-1000v**  
**Forward current-1.5A**

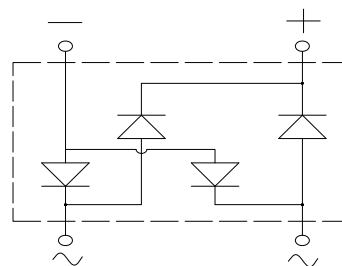
**Features**

Glass passivated chip  
High surge current capability  
Ideal for surface mounted applications  
Low power loss, high efficiency  
Plastic Case Material has UL Flammability



**Mechanical Data**

Package: DBS  
Terminals: Tin Plated leads, solderable per  
Mil-STD-750 Method 2026  
Polarity: As marked  
Molding compound meets UL 94 V-0 flammability rating,  
ROHS-compliant



**Maximum Ratings (Ta=25℃ Unless otherwise specified)**

Type Number	SYMBOL	DB157S	Unit
Maximum Recurrent Peak Reverse Voltage	$V_{RRM}$	1000	V
Maximum RMS Voltage	$V_{RMS}$	700	V
Maximum DC Blocking Voltage	$V_{DC}$	1000	V
Maximum Average Forward Rectified Current	$I_{O(AV)}$	1.5	A
Peak Forward Surge Current 8.3ms Single half-sine-wave superimposed on rated load(JEDEC Method) on rated	IFSM	60.0	A
Forward Surge Current (Non-repetitive) @1ms, square wave, 1 cycle, Tj=25℃		120.0	A
Current squared time @1ms≤t.3≤ms Tj=25℃, Rating of per diode	$I^2t$	14.9	A <sup>2</sup> S
Maximum Forward Voltage at 1.5A DC	$V_{FM}$	1.1	V
Maximum Reverse Current TA = 25℃	IR	5	uA
at Rated DC Blocking Voltage TA = 125℃		100	
Typical Thermal Resistance	$R_{QJa}$	75.0	℃/W
Operating Junction Temperature Range	$T_J$	—55to+150	℃
Storage Temperature Range	$T_{STG}$	—55to+150	℃



FIG. 1 MAXIMUM AVERAGE FORWARD CURRENT DERATING

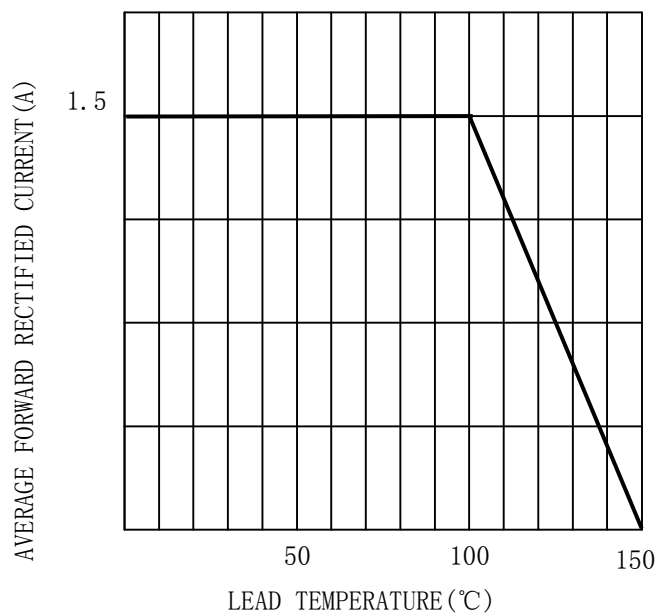


FIG. 2 TYPICAL FORWARD CHARACTERISTICS

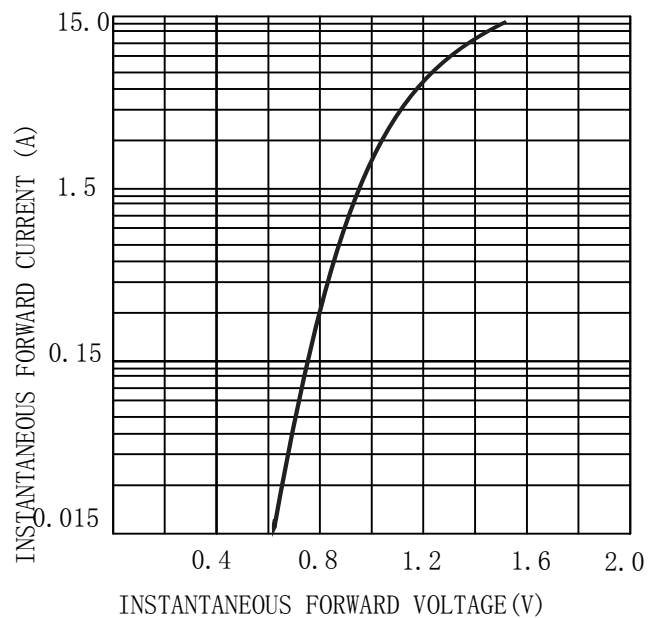


FIG. 3 MAXIMUM NON-REPEITIVE SURGE CURRENT

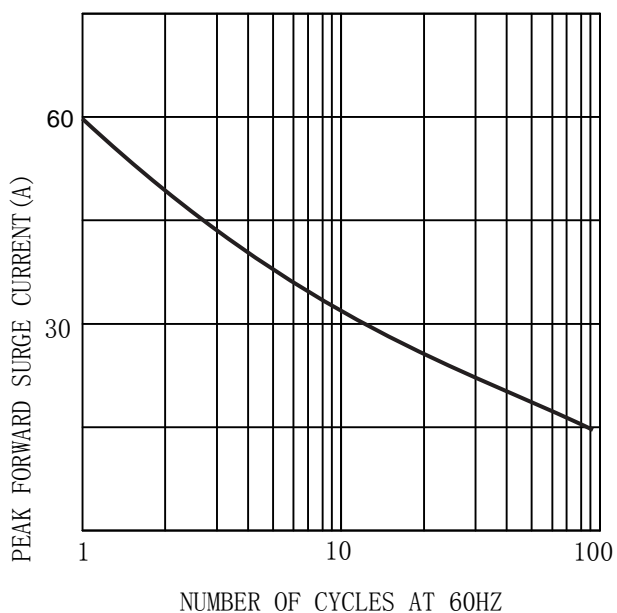
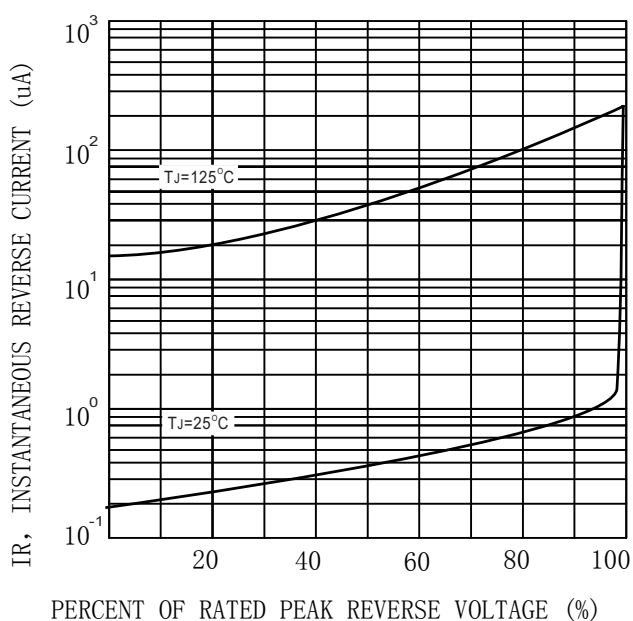


FIG. 4 TYPICAL REVERSE CHARACTERISTICS (per element)





## MARKING INFORMATION



= Logo

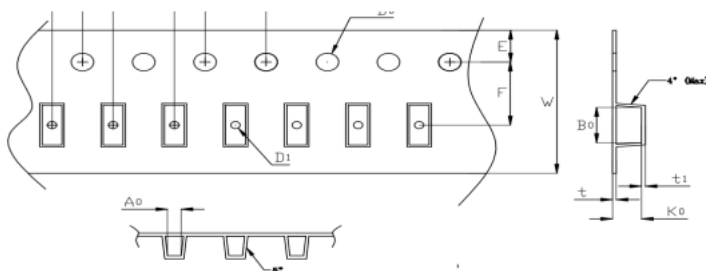
\*\*\*\* = Date Code Marking

DB157S = Marking Code

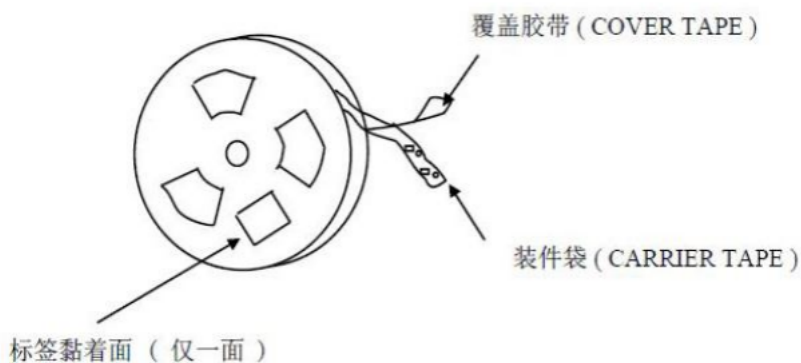
Print according to customer request

## PACKING REQUIRMENTS

- Carrier tape packing



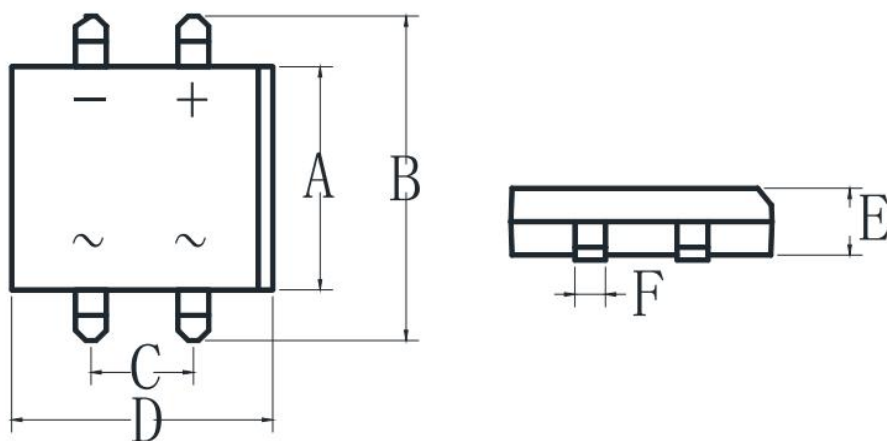
Specifications	Carrier tape type	Ao	Bo	Ko	Po	W	t1	Explain
DBS	Anti-static	8.70± 0.10	10.41±0.10	3.30± 0.10	4.00± 0.10	16.0± 0.30	0.25± 0.05	



DEVICE TYPE	Tape width	13"Reel		
		Q'TY/REEL (pcs)	BOX/CARTOON	Q'TY/REEL (pcs)
DBS	16mm	1500	18	27000



## Outline Dimensions



DBS				
DIM	INC HES		MM	
	MIN	MAX	MIN	MAX
A	0.24	0.26	6.10	6.50
B	0.37	0.39	9.50	9.90
C	0.19	0.20	4.80	5.20
D	0.31	0.33	7.95	8.35
E	0.09	0.11	2.30	2.70
F	0.04	0.05	0.90	1.20



## **Important Statements and disclaimers.**

Do not copy or modify file information without permission.

Xumao Micro reserves the right to modify this document and its products.

Specifications are available without prior notice. Customer shall obtain and confirm the latest product information and specifications prior to final design, purchase or use.

Xumao Micro does not assume any implied warranties, including warranties of fitness for special purposes, non-infringement and merchantability.

The products shown here are not designed and licensed for demanding equipment at a level of reliability or for human life and any life-saving related applications or life-sustaining, such as medical devices, transportation equipment, aerospace machinery, and so on. Customers who use or sell these products for such applications do so at their own risk.

As Xumao Micro uses batch number as tracking benchmark, please provide batch number for tracking in case of exception.