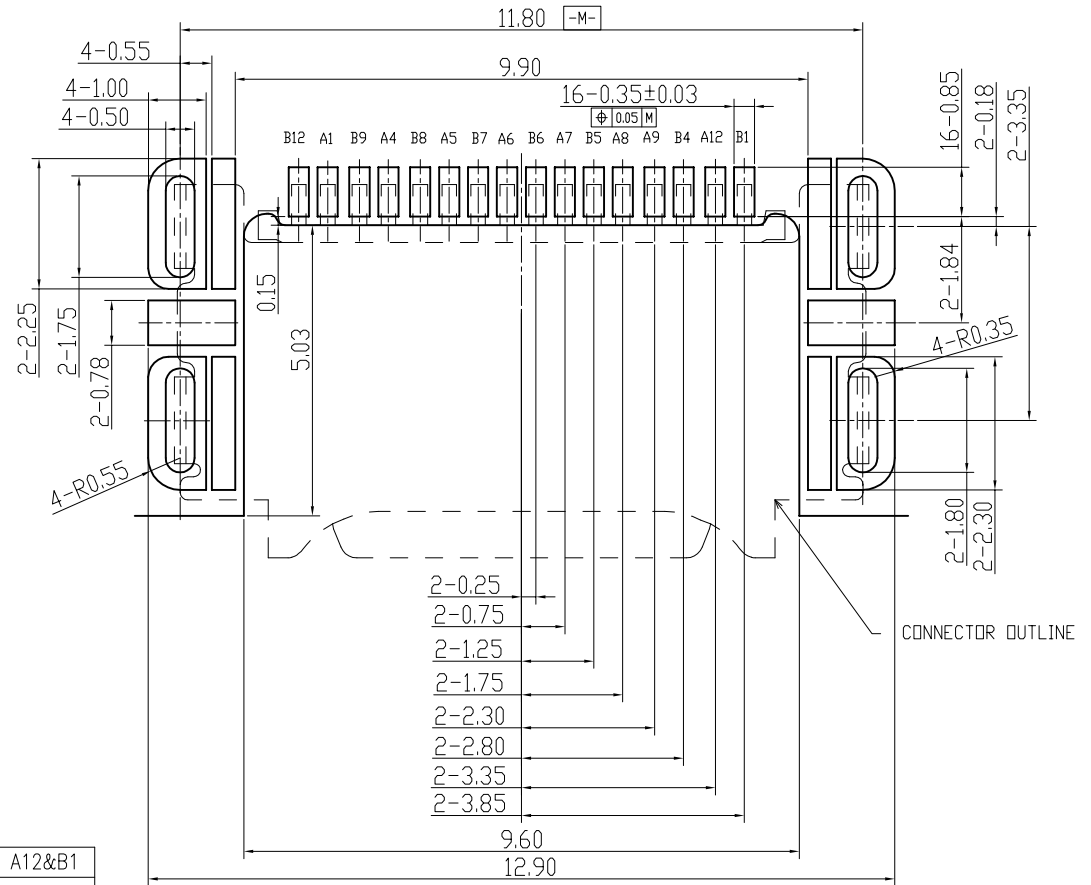
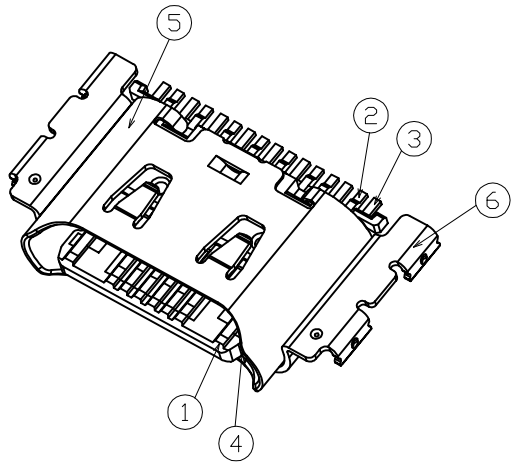


- NOTES:
- ELECTRICAL CHARACTERISTICS:
 - CURRENT RATING: VBUS AND GND CONTACTS RATED AT 2.5A MAX., PARALLELED FOR A TOTAL OF 7.5A MAX.
 - TEMPERATURE RANGE: -40 °C ~ 85 °C
 - CONTACT RESISTANCE: 30 MILLIONHM MAX.
 - DIELECTRIC WITHSTANDING VOLTAGE: 500 VAC r.m.s
 - INSULATION RESISTANCE: 100 MEGOHMS MIN.
 - MECHANICAL CHARACTERISTICS:
 - INSERTION FORCE: 5~20N
 - EXTRACTION FORCE: INITIAL:8~20N;
DURABILITY:8~20N(1000CYCLES),6~20N(10000CYCLES);
 - DURABILITY:10,000CYCLES.
 - PLUG垂直顶塑胶（避开铁壳止挡位），顶出力14kgf Min., 垂直顶插口止挡位，顶出力20kgf Min.
 - 下壳焊接后剥离强度100N Min.
 - HOUSING FLASH: 0.10 MM MAX,METAL BURR:0.05 MM MAX.
 - Mark "■" as the key measurement sizeMark "▴" as the CPK size.

6	BOTTOM SHELL	1PCS	STAINLESS STEEL	50u" MIN. Ni UNDERPLATING OVERALL
5	MAIN SHELL	1PCS	STAINLESS STEEL	50u" MIN. Ni UNDERPLATING OVERALL
4	MID PLATE	1PCS	STAINLESS STEEL	NO PLATED, CLEAR
3	CONTACT B	1SET	COPPER ALLOY	Au 30u" PLATING ON CONTACT AREA Au 2u" PLATING ON SOLDER AREA
2	CONTACT A	1SET	COPPER ALLOY	50u" MIN. NICKEL UNDER PLATING ALL OVER
1	HOUSING	1PCS	NYLON	COLOR:BLACK
ITEM	DESCRIPTION	QTY.	MATERIAL	FINISH
TOLERANCES UNLESS OTHERWISE SPECIFIED		SECURITY CLASSIFICATION		
GENERAL X ±0.20 X ±0.15 XX ±0.10 XXX ±0.05		TOP SECRET SECRET PUBLIC		
ANGLES ±1.0°		APPROVED DATE		
SCALE 1 : 1		CHECKED DATE		
SHEET 1 OF 3		DRAWN DATE		
UNIT mm		TANG.HZ 2023.12.26		
CUSTOMER DRAWING		SERIES TYPE C SERIES		
		DWG NO. TYPE-C-16PIN-815-114-M2		
		SIZE A4		
		REV. A		



USB 16PIN TYPE C
SINK2.03 CH=0.35 SMT TYPE


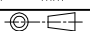


PIN ASSIGNMENTS

MID PLATE	GND	GROUNG RETURN, CONTATC A1	MID PLATE	GND	GROUNG RETURN, CONTATC A12&B1
A12	GND	GROUNG RETURN	B1	GND	GROUNG RETURN
A9	VBUS	BUS POWER	B4	VBUS	BUS POWER
A8	SBU1	SIDEBAND USE(SBU)	B5	CC2	CONFIGURATION CHANNEL
A7	DN1	POSITIVE HAL F OF USB2.0 DIFFERENTIAL PAIR-POSITION1	B6	DP2	POSITIVE HAL F OF USB2.0 DIFFERENTIAL PAIR-POSITION1
A6	DP1	POSITIVE HAL F OF USB2.0 DIFFERENTIAL PAIR-POSITION1	B7	DN2	POSITIVE HAL F OF USB2.0 DIFFERENTIAL PAIR-POSITION1
A5	CC1	CONFIGURATION CHANNEL	B8	SBU2	SIDEBAND USE(SBU)
A4	VBUS	BUS POWER	B9	VBUS	BUS POWER
A1	GND	GROUNG RETURN	B12	GND	GROUNG RETURN
PIN No.	NAME	DESCRIPTION	PIN No.	NAME	DESCRIPTION

RECOMMENDED P.C.B. LAYOUT (THICKNESS:1.0MM)

TOLERANCE UNSPECIFIED $\pm 0.05\text{mm}$ SCALE: 2:1

TOLERANCES UNLESS OTHERWISE SPECIFIED		SECURITY CLASSIFICATION		
GENERAL X. ± 0.20 XX ± 0.15 XXX ± 0.10 XXXX ± 0.05		<input type="checkbox"/> TOP SECRET <input type="checkbox"/> SECRET <input checked="" type="checkbox"/> PUBLIC		
ANGLES $\pm 1.0^\circ$		APPROVED DATE		TITLE USB 16PIN TYPE C SINK2.03 CH=0.35 SMT TYPE
SCALE 1 : 1		CHECKED DATE		
SHEET 2 OF 3		DRAWN DATE		SERIES TYPE C SERIES
UNIT mm		TANG.HZ 2023.12.26		
		CUSTOMER DRAWING		SIZE A4
		DWG NO. TYPE-C-16PIN-815-114-M2		REV. A



REV.	EC#	DESCRIPTION	APPROVED	DATE
A	ECR2023A106	NEW RELEASE FOR DEVELOP		

NOTES 1 :

- Put the finished product into CARRIER TAPE according to the specified packaging quantity as shown in the figure. Then paste one Part label and one RoHS label on the reel.
- Every 10 rolls is packed into a Carton, 1400PCS/Reel, 14000PCS/Carton;
- After the carton is sealed, the carton is sealed with sealant, and the shipping label and RoHS label are pasted on the side;
- Label;If the customer requires another label, the label shall be affixed according to the requirements specified in the order;
- The outer case is bound with sealing tape;
- This packing method is applicable to the products:TYPE-C-16PIN-815-114-M2(16PIN TYPE-C)

NOTES 2:

- Tape Reel Material:PET Transparent
- Package Content: See Tab below

PRODUCT No.	QTY/REEL	REEL/CARTON	QTY/CARTON
TYPE-C-16PIN-815-114-M2	1400PCS	10 REEL	14000PCS
TOLERANCES UNLESS OTHERWISE SPECIFIED GENERAL X ±0.25 X ±0.15 .XX ±0.10 .XXX ±0.05 ANGLES ±1.0°		SECURITY CLASSIFICATION <input type="checkbox"/> TOP SECRET <input type="checkbox"/> SECRET <input checked="" type="checkbox"/> PUBLIC APPROVED DATE CHECKED DATE DRAWN DATE TANG.HZ 2023.12.26	
SCALE 1 : 1 SHEET 3 OF 3 UNIT mm		TITLE USB 16PIN TYPE C SINK2.03 CH=0.35 SMT TYPE SERIES TYPE C SERIES DWG NO. TYPE-C-16PIN-815-114-M2 SIZE A4 REV. A	
CUSTOMER DRAWING			

SE-RD-016-A