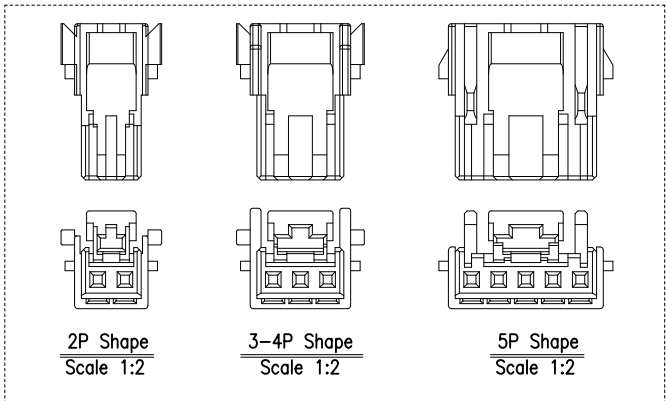
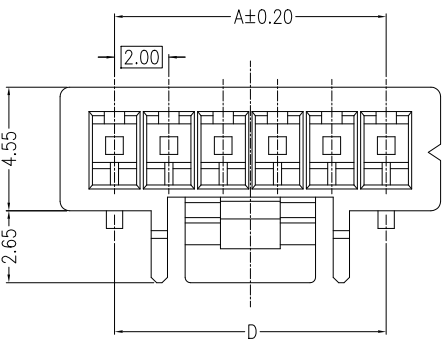
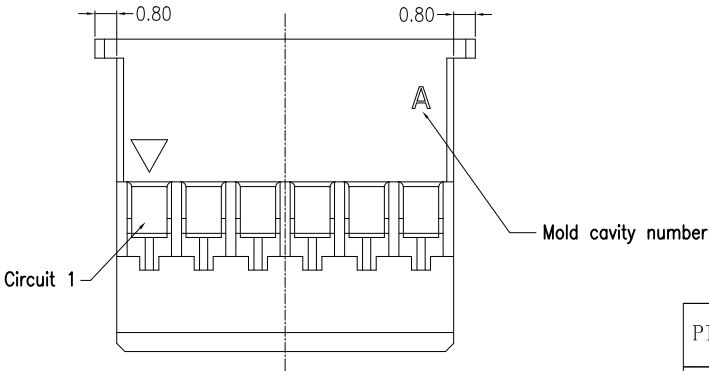
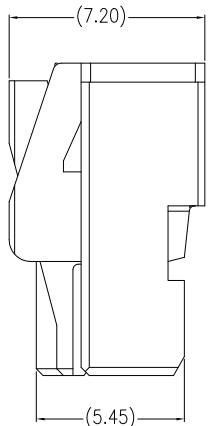
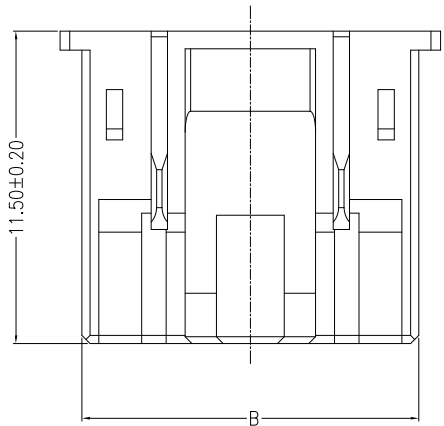


REV.	DESCRIPTION	DESIGN	APPROVAL	DATE

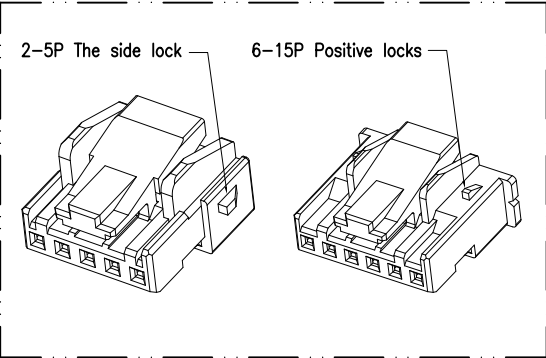
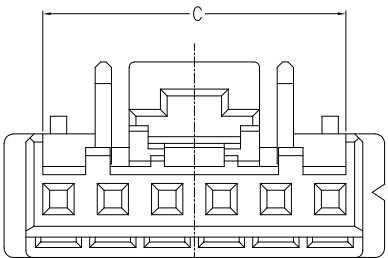



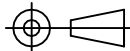
Specifications:
Contact resistance:<10mΩ;
Insulation resistance:>1000MΩ;
Rated voltage:250V AC/DC;
Rated current:3.0A AC/DC;
Withstand Voltage:800V AC/minute
Temperature Range:-40℃~+125℃
Housing:PA66 UL94V-0,Natura
RoHS compliant;
Order Information:

961-XX17-062
①
① Pin NO.:XX-02~15PIN



PIN.	Dimensions (mm)				PIN.	Dimensions (mm)			
	A	B	C	D		A	B	C	D
02	2.00	4.40	3.30		09	16.00	18.40	17.15	12.00
03	4.00	6.40	5.10		10	18.00	20.40	19.15	17.40
04	6.00	8.40	6.80		11	20.00	22.40	21.15	17.40
05	8.00	10.40	9.05		12	22.00	24.40	23.15	17.40
06	10.00	12.40	11.15	10.00	13	24.00	26.40	25.15	17.40
07	12.00	14.40	13.15	10.00	14	26.00	28.40	27.15	17.40
08	14.00	16.40	15.15	10.00	15	28.00	30.40	29.15	17.40



X.± 0.5	X.*± 1*		Guangdong JiDe Precision Electronics Co., Ltd					
.X± 0.30	.X*± 0.5*		广东济德精密电子有限公司					
.XX± 0.20	.XX*± /							
.XXX± 0.15	.XXX*± /		TITLE: 2.0mm Pitch Female Housing		PART NO. 961-XX17-062			
UNITS:	mm							
The information in this document is property of JIDCON company and should not be copied or reproduced in any other way, without written permission.			APPD:		DWG NO: C-961-XX17-062			
			CHKD:					
			DRAW:			SCALE	SHEET	REV.
						1:1	1/1	A0